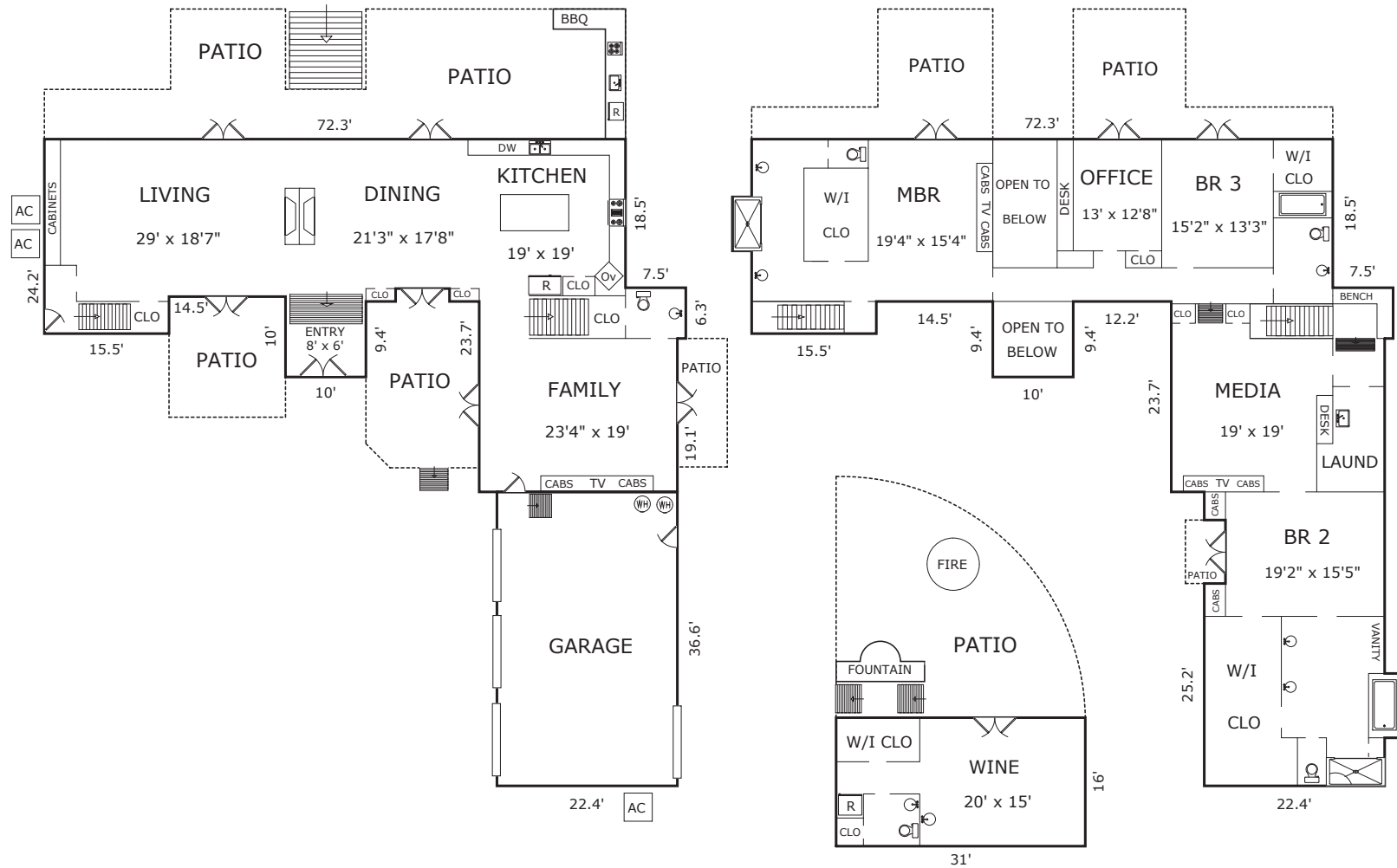


1277 CASTRO ROAD, MONTEREY, CA 93940



AREA CALCULATIONS (approximate)

First Floor:	2,199sf
Second Floor:	2,784
Wine:	496
Net Livable Area:	5,479sf

Garage:		822
Patio:	914	731
Patio:	300	298
Patio:	294	218
Patio:	99	40